

**FLUGO**

# FES Series

Vortex NonClogging Centrifugal Pump



## DESIGN FEATURES

**1. Heavy Duty, Rigid and Large Diameter Shaft**  
Designed for minimum deflection to increase the life of the mechanical seal.

**2. Double Row Deep Groove Ball Bearing**  
to withstand axial thrust at drive end.

**3. Oil Sight Glass**  
ensure proper oil level that is critical for bearing life.

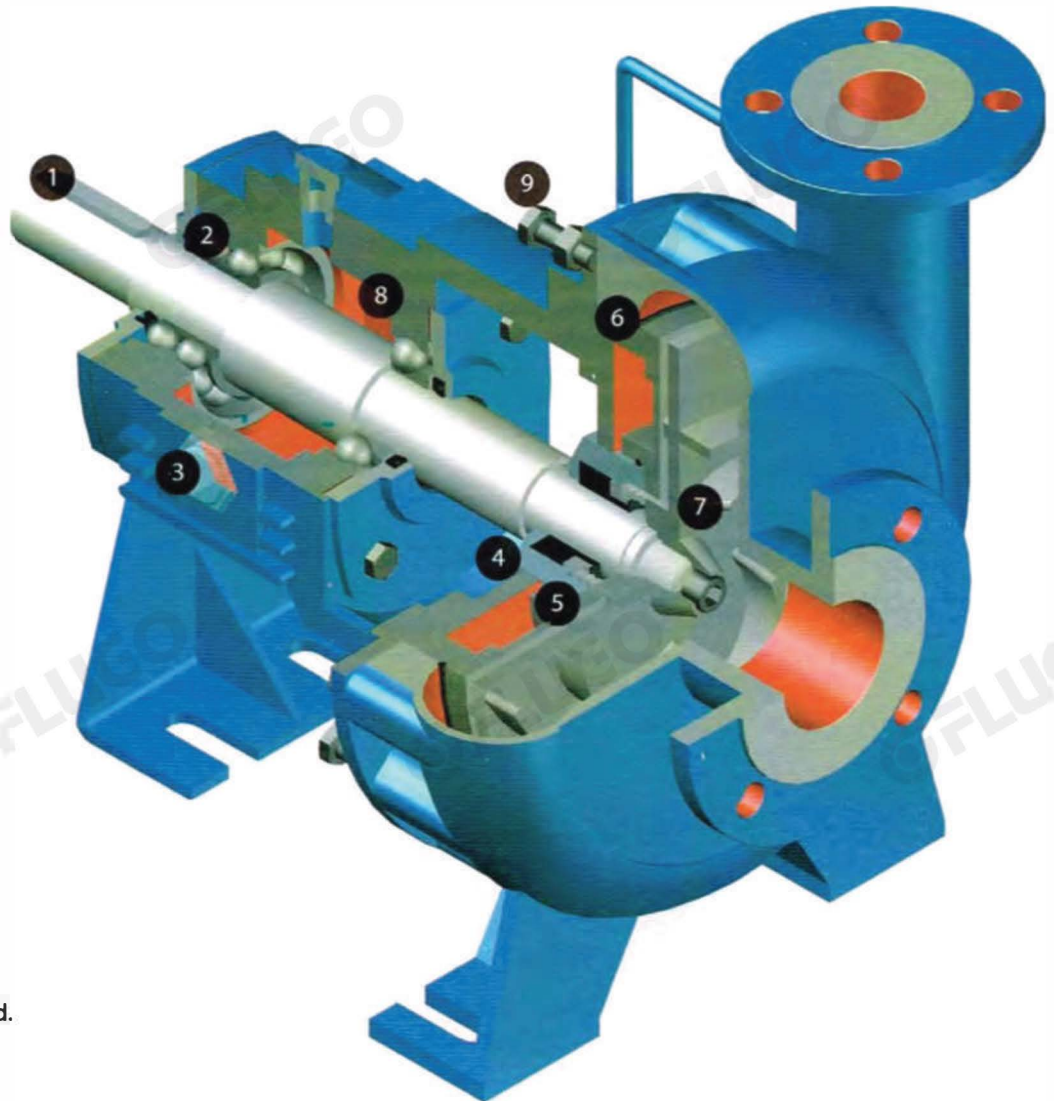
**4. Large Sealing Chamber**  
to guarantee a better cooling and lubrication of mechanical seal.

**5. Standard SIC Mechanical Seal**  
good reliability for abrasive liquid.

**6. Casing Wear Plate**  
to protect pump casing design for easy maintenance.

**8. Extra Large Oil Reservoir**  
increase oil capacity and provide better heat transfer to reduce oil temperature.

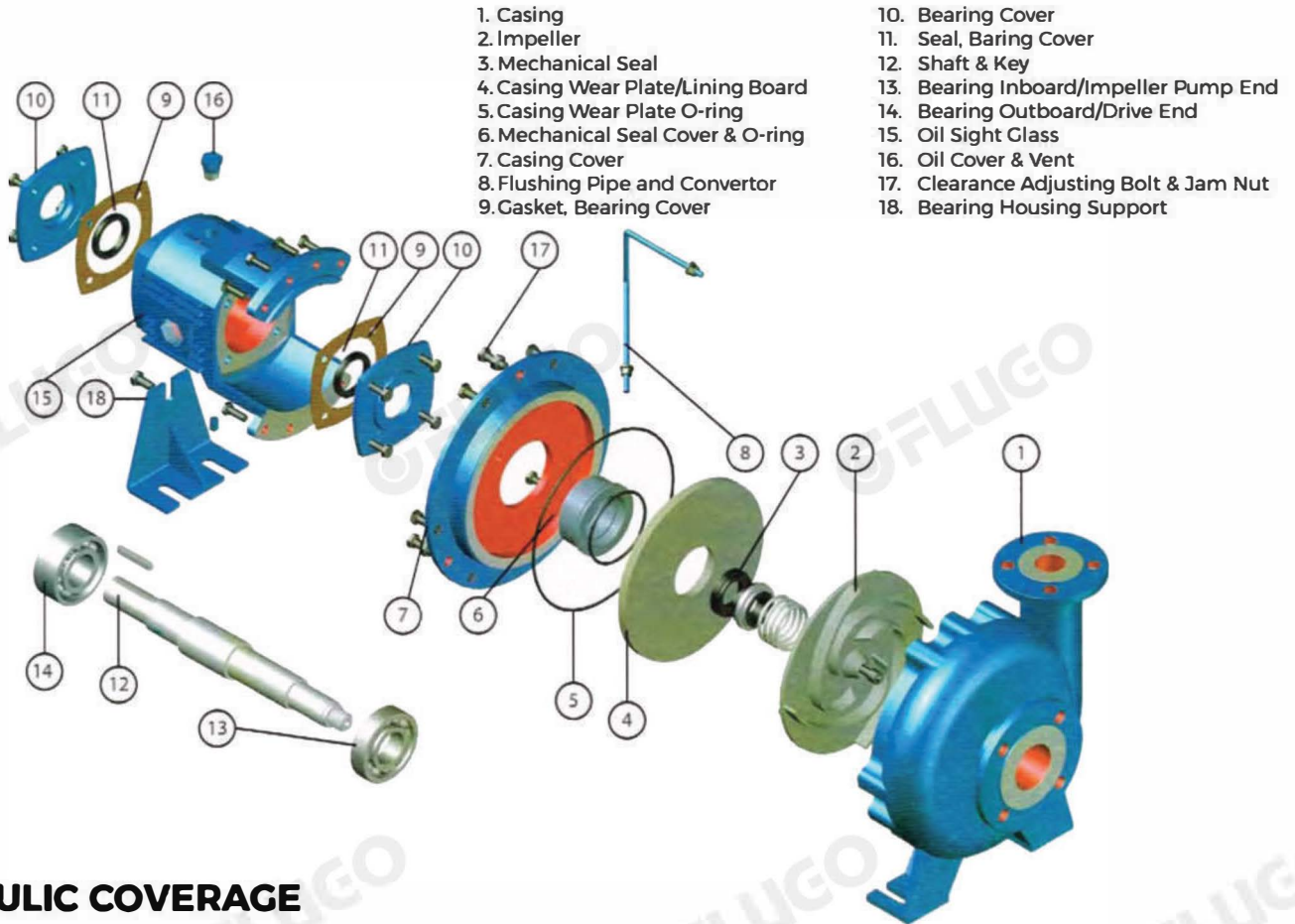
**9. Impeller Adjusting Screw**  
to keep the clearance accuracy extend pump performance and efficiency.



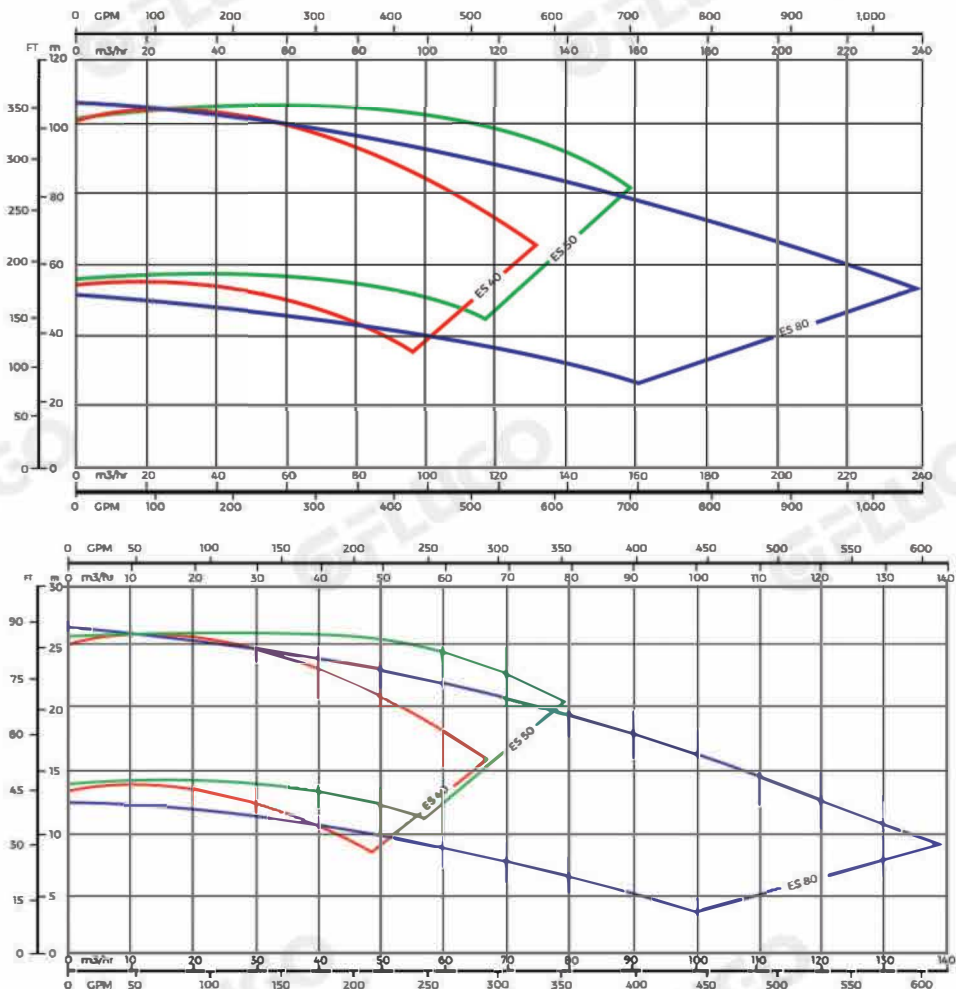
**7. Semi Open Impeller**  
with back vanes handling liquid that contain solid particles, back vanes will reduce solid particles in sealing chamber.



## STANDARD ARRANGEMENT - PART LIST

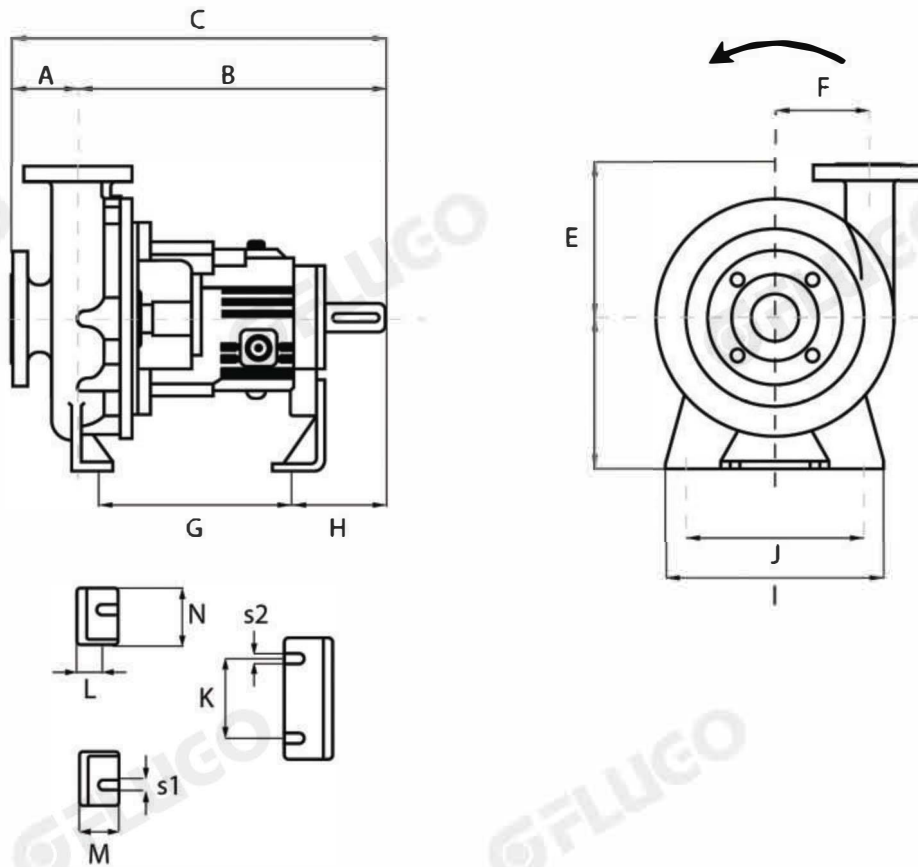


## HYDRAULIC COVERAGE

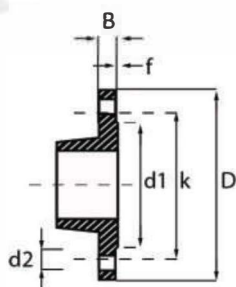


## DIMENSIONS

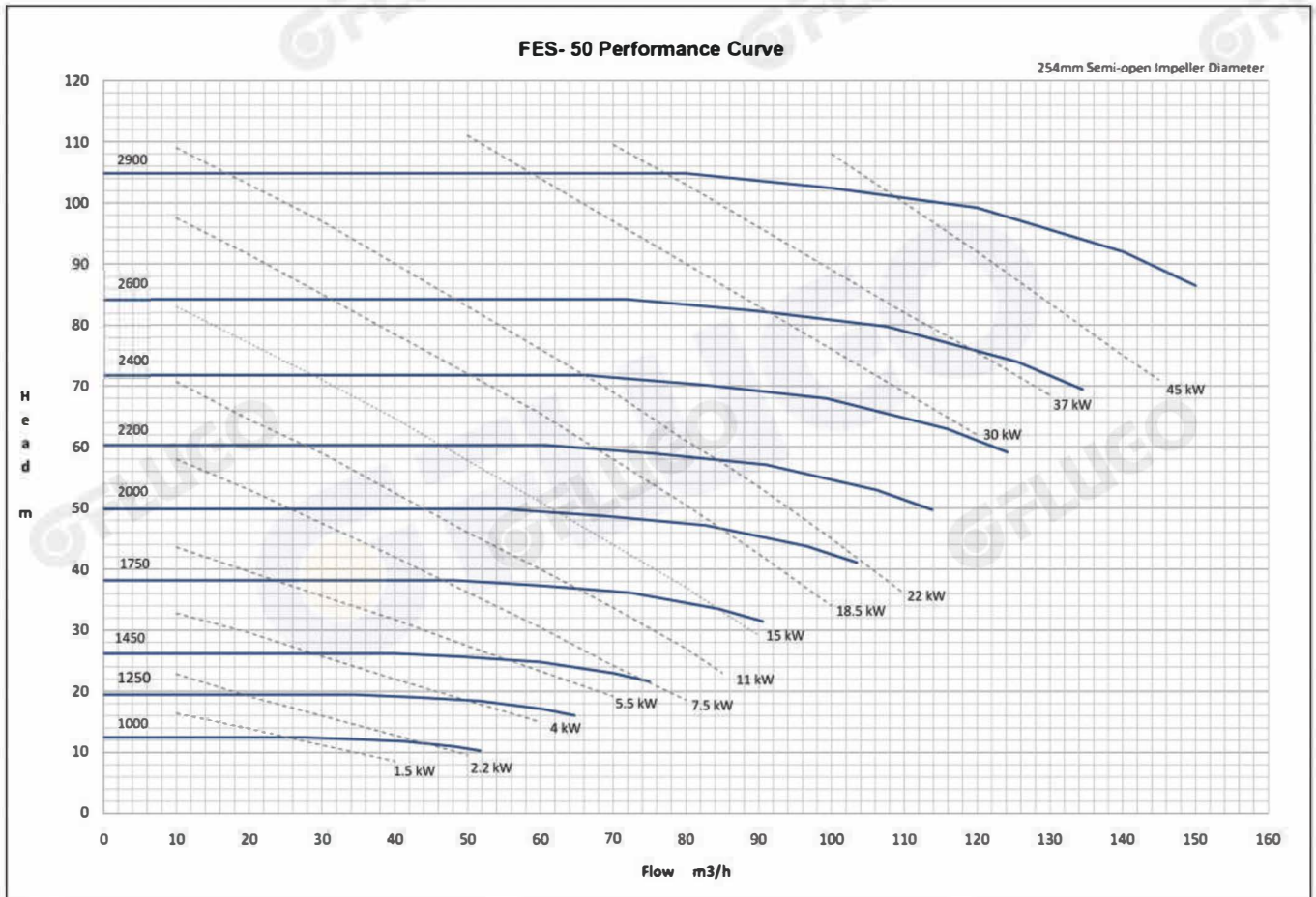
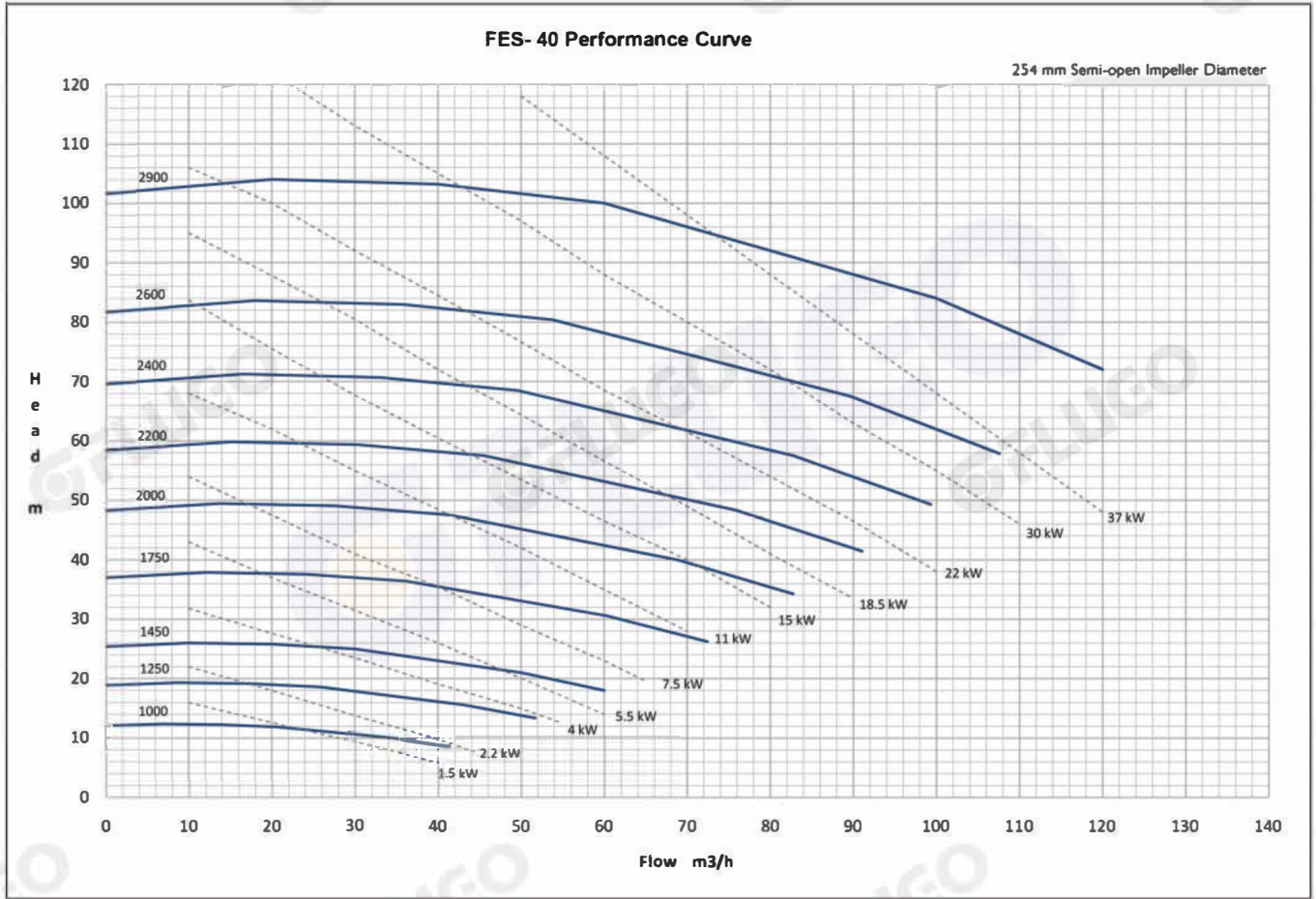
All dimensions in mm, Not to be used for construction



MODEL	Pump Casing Dimensions								Foot Casing Dimensions										Weight kg
	DNd	DNs	A	B	C	D	E	F	G	H	I	J	K	L	M	N	s1	s2	
FES 40	40	65	85	430	515	210	203	135	265	130	300	245	110	35	55	75	18	14	79
FES 50	50	80	115	430	545	210	215	123	265	130	300	245	110	35	55	75	18	14	82
FES 80	80	100	115	440	555	210	242	130	265	130	300	245	110	35	55	75	18	14	94
FES 100	100	125	125	453	578	210	262	148	288	130	300	245	110	35	55	75	18	14	



Flange Dimension								
DN	D	d1	k	b	f	d2	No Holes	Bolt
40	150	88	110	18	3	18	4	M16
50	165	102	125	20	3	18	4	M16
65	185	122	145	20	3	18	4	M16
80	200	138	160	22	3	18	8	M16
100	220	158	180	24	3	18	8	M16
125	250		210		3	18	8	M16



FES- 80 Performance Curve

254 mm Semi-open Impeller Diameter

